



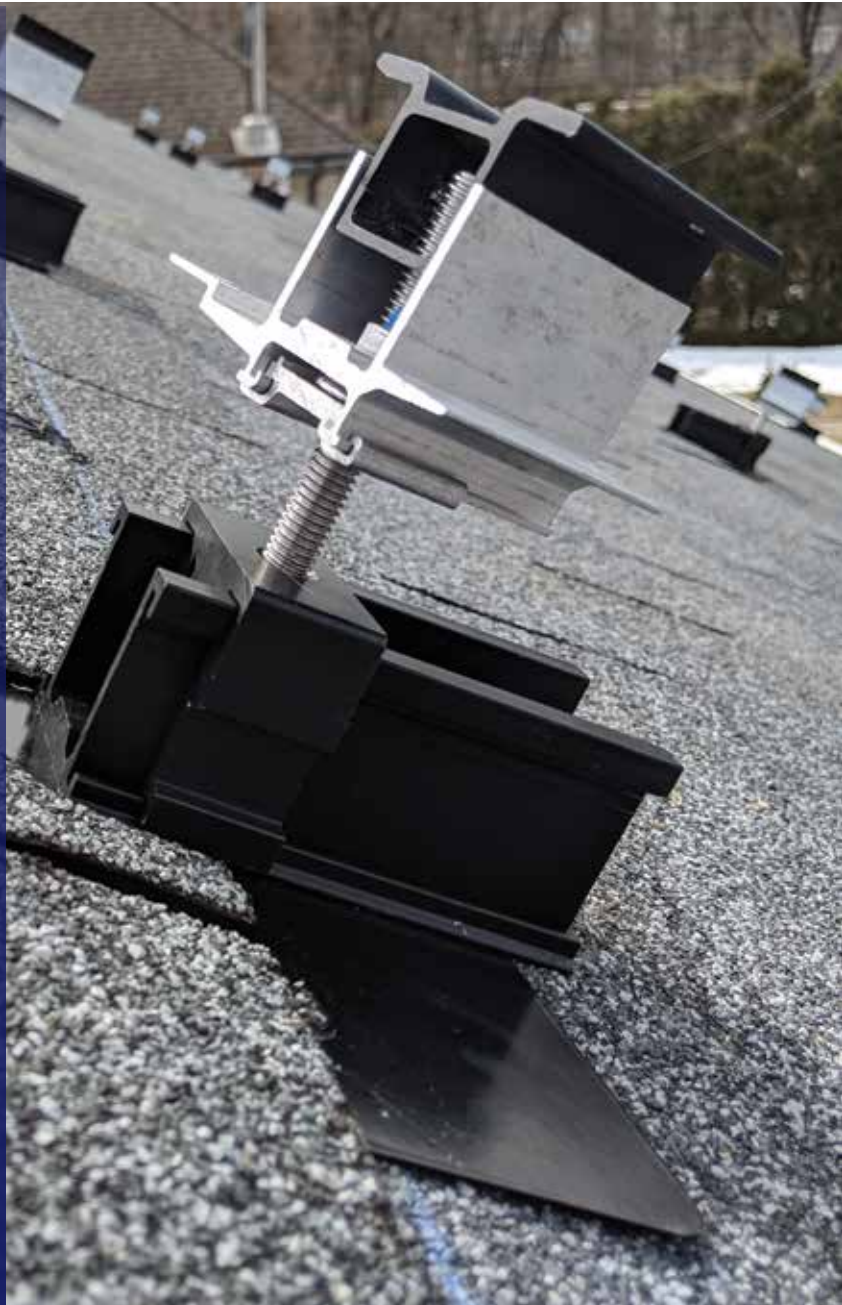
# EcoFasten

For Installers. By Installers.



THE RAIL-LESS  
MOUNTING SYSTEM

**ROCKIT**



[www.ecofastensolar.com](http://www.ecofastensolar.com)

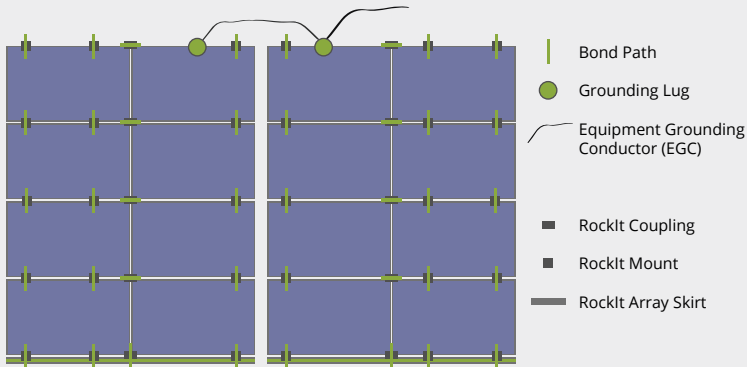
# CONTENTS

Last Edited:  
8/17/2020

VERSION 2.1 PUBLISHED: 8/17/2020

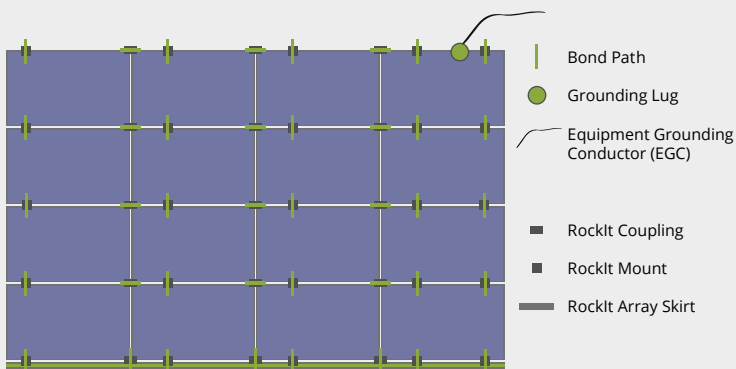
---

PAGE 01.....	CONTENTS
PAGE 02.....	INTRODUCTION
PAGE 03.....	SYSTEM OVERVIEW
PAGE 04.....	RATINGS
PAGE 05.....	SYSTEM INFORMATION
PAGE 06.....	COMPONENTS
PAGE 07 - 08.....	ASSEMBLING ROCKIT
PAGE 09.....	MODULE SPACING
PAGE 10.....	MOUNT PLACEMENT
PAGE 11.....	FLASHING AND SLIDE INSTALLATION
PAGE 12 - 14.....	SYSTEM INSTALLATION
PAGE 15.....	ROCKIT TILE INSTALLATION
PAGE 16.....	ROCKIT SLIDE INSTALLATION CORRUGATED METAL
PAGE 17.....	CONDUIT MOUNT INSTALL
PAGE 18.....	TILE CONDUIT MOUNT INSTALL
PAGE 19.....	ACCESSORIES
PAGE 20.....	BONDING AND GROUNDING
PAGE 21.....	GROUNDING LUG INSTALL
PAGE 22 - 24.....	UL2703 CERTIFIED MODULES



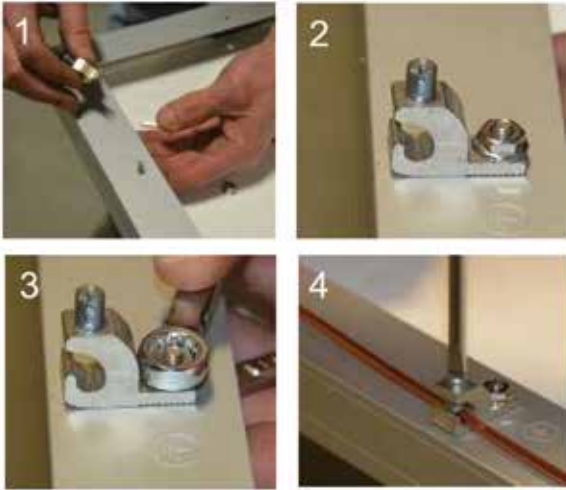
## 🏠 THERMAL EXPANSION AND BONDING

- A thermal expansion gap is required per each continuous 40' length of modules.
- Omit a coupling and leave a 2" gap in the RockIt array skirt and also between the modules at that point.
- Bonding across the thermal gap should be accomplished with an approved ground lug for each array and an equipment grounding conductor.



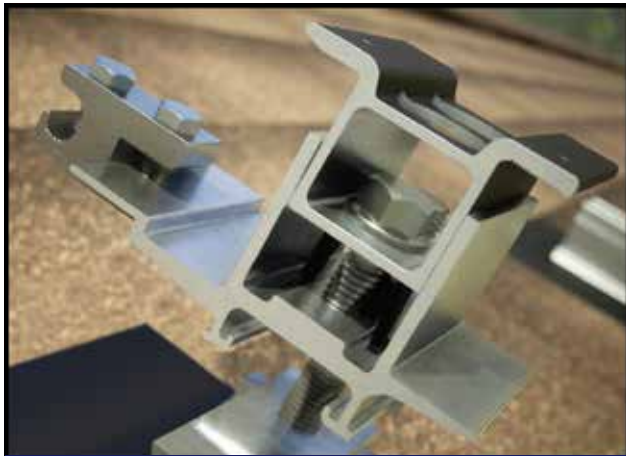
## 🔄 BONDING PATH & ASSEMBLY

- RockIt 3.0 mount bonds N-S rows of modules
- RockIt 3.0 coupling bonds E-W rows of modules
- RockIt array skirt is bonded to the array via the RockIt mount.
- One approved ground lug is required per continuous PV array.



## NECESSARY COMPONENTS

1. One of the following grounding lugs (or any UL2703 Compliant ground Lug):
  - Burndy CL50-1TN Ground Lug (UL2703 - E3514343 / UL 467 - E9999)
  - ILSCO SGB-4 Ground Lug (UL2703 - E354420/ UL 467 - E34440)
  - ILSCO GBL-4DBT (UL2703 - E354420 / UL 467 - E34440)
  - ILSCO GBL-4DBTH (UL2703 - E354420 / UL 467 - E34440)
  - ILSCO GBL-4SS (UL2703 - E354420 / UL 467 - E34440)



Above: Optional Location for grounding lug on last row upslope of array

## INSTALLATION

1. Insert the flange bolt into the module ground hole. Place Star Washer over bolt. Place ground lug over the bolt and Star Washer, and turn to desired orientation.
2. Install Flange Nut.
3. Tighten Flange Nut/Bolt.
4. Place wire in Ground Lug channel and tighten set screw to complete assembly.

\*Equipment grounding wire should be sized in accordance with the National Electrical Code, NFPA70 and a minimum of 1/4" clearance is required between bare copper wires and aluminum components.

This racking system may be used to ground and/or mount a PV module complying with UL 1703 or UL 61730 only when the specific module has been evaluated for grounding and/or mounting in compliance with the included instructions.

Unless otherwise noted, “xxx” refers to the module power rating and both black and silver frames are included in the certification.

Manufacturer	List of UL2703 Approved Modules
<p><b>AXITEC</b></p>	<p>AXITEC MODULES WITH 35 MM FRAMES            AC-XXXY/AAZZ            “Y” CAN BE M, P, OR MH; AND “AA” CAN BE BLANK, 125 OR 156; AND “ZZ” CAN BE 60S OR 120S</p>
<p><b>CANADIAN SOLAR</b></p>	<p>CANADIAN SOLAR MODULES WITH 35 AND 40 MM FRAMES            CSBY-XXXZ            WHERE “B” CAN BE 1, 3 OR 6; “Y” CAN BE H, K, P, OR V; AND “Z” CAN BE M, MS, M-SD, MS-SD, P, PX, OR P-SD</p>
<p><b>ET SOLAR</b></p>	<p>ET SOLAR MODULES WITH 35 MM FRAMES            ET-Y660XXXAA            WHERE “Y” CAN BE P, L, OR M; AND “AA” CAN BE WB, WW, BB, WBG, WWG, WBAC, WBCO, WWCO, WWBCO OR BBAC</p>
<p><b>HANWHA Q CELLS</b></p>	<p>Hanwha Q CELLS Modules with 32, 35 and 40mm frames            aaYY-ZZ-xxx            where “aa” can be Q. or B.; “YY” can be PLUS, PRO, PEAK, LINE PRO, LINE PLUS, PLUS DUO or PEAK DUO; and “ZZ” can be G3, G3.1, G4, G4.1, L-G2, L-G2.3, L-G3, L-G3.1, L-G3y, L-G4, L-G4.2, L-G4y, LG4.2/TAA, BFR-G3, BLK-G3, BFR-G3.1, BLK-G3.1, BFR-G4, BFR-G4.1, BFR G4.3, BLK-G4.1, G4/SC, G4.1/SC, G4.1/TAA, G4.1/MAX, BFR G4.1/TAA, BFR G4.1/MAX, BLK G4.1/TAA, BLK G4.1/SC, EC-G4.4, G5, G5/SC, BLK-G5, BLK-G5/SC, L-G5, L-G5.1, L-G5.2, L-G5.2/H, L-G5.3, G6, G6/SC, G6+, BLK-G6, G7, BLK-G6+, BLK-G6+/AC, BLK-G6+/SC, BLK-G7, G7.2, G8, BLK-G8, G8+, BLK-G8+ L-G7, L-G7.1, L-G7.2, L-G7.3, or ML-G9</p>
<p><b>HYUNDAI</b></p>	<p>HUYNDAI MODULES WITH 35 MM FRAMES            HIY-SXXXZZ            WHERE “Y” CAN BE A, M OR S; AND “ZZ” CAN BE HG, KI, MF, MG, SG, RG, RG (BK), OR TG</p>

<b>RECOM</b>	RECOM MODULES WITH 35 AND 40 MM FRAMES RCM-XXX-6YY WHERE "YY" CAN BE MA, MB, ME OR MF
<b>RENESOLA</b>	RENESOLA 60-CELL MODULES WITH 40 MM FRAMES JCXXXY-ZZ "Y" CAN BE F, M OR S; AND "ZZ" CAN BE AB, AB-B, ABH, ABH-B, ABV, ABV-B, BB, BB-B, BBH, BBH-B, BBV, BBV-B, DB, OR DB-B
<b>S-ENERGY</b>	S-ENERGY 60-CELL MODULES WITH 40 FRAMES SNXXXY-ZZ "Y" CAN BE M OR P; AND "ZZ" CAN BE 10, OR 15
<b>SILFAB</b>	SILFAB MODULES WITH 38 MM FRAMES SYY-Z-XXXAB WHERE "YY" CAN BE IL, SA, LA, SG OR LG; "Z" CAN BE BLANK, M, P, OR X; "A" CAN BE BLANK, B, H, M, N; AND "B" CAN BE A, L, G, OR T
<b>SOLARIA</b>	SOLARIA MODULES WITH 40 MM FRAMES POWERXT XXXR-ZZ "ZZ" CAN BE AC, BD, BX, BY, PD, PX, PZ, WX OR WZ
<b>SUNPOWER</b>	SUNPOWER MODULES WITH 40 MM FRAMES SPR-A-XXX-YY YY CAN BE BLANK OR G-AC
<b>SUNPREME</b>	SUNPREME MODULES WITH 40MM FRAMES GXB-XXXT
<b>TRINA</b>	TRINA MODULES WITH 35 MM FRAMES TSM-XXXYYZZ "YY" CAN BE PA05, PC05, PD05, PX05, DD05, DD05A, DD06, DE05, DX05A; AND "ZZ" CAN BE BLANK OR A,.05, .08, A.05, A.08, A(II), A.05(II), A.08(II), H, H.05, H.08, H.05(II), H.08 (II), M, M(II)
<b>YINGLI</b>	YGE AND YLM SERIES MODULES WITH 35 AND 40 MM FRAMES

System components should be periodically re-inspected for loose components, loose fasteners, and corrosion such that if found, the affected components are to be immediately replaced.